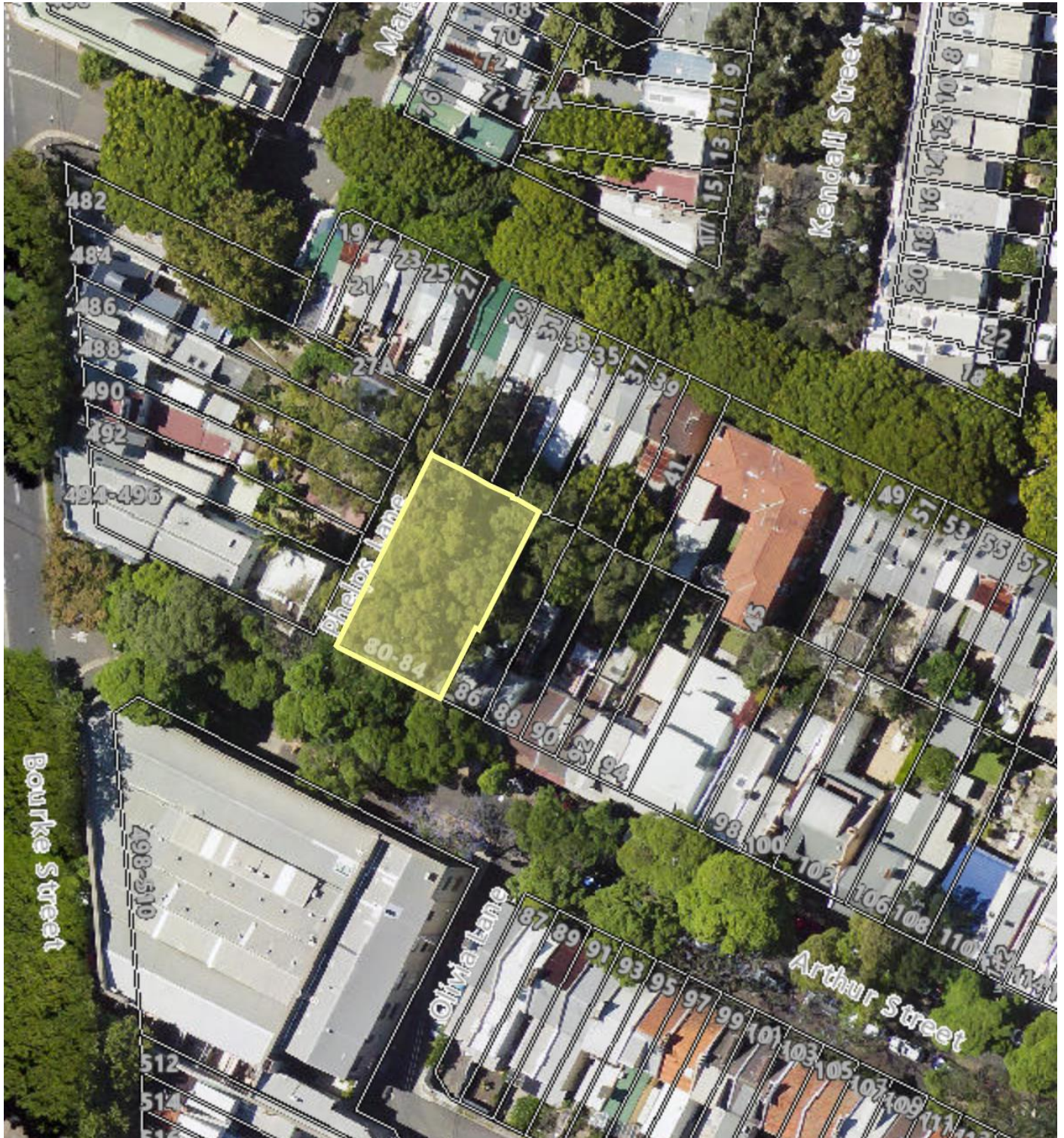


Attachment A

Location Plan and Site Photos

Arthur Street Reserve Playground

Arthur Street, Surry Hills





Existing playground in the reserve looking south towards Arthur Street – play equipment is at the end of its lifecycle; soft-fall is worn and separating from edges. Playground is well shaded from the existing trees. Small area of turf in poor condition.



Looking south-east along Arthur Street – playground current location in the centre of the reserve. Uneven paving along the footpath.



Uneven paving around street tree due to tree roots



Looking south from Phelps Lane. Playground located in the centre of the reserve. Poor area of turf adjacent seating area to the rear of the reserve.